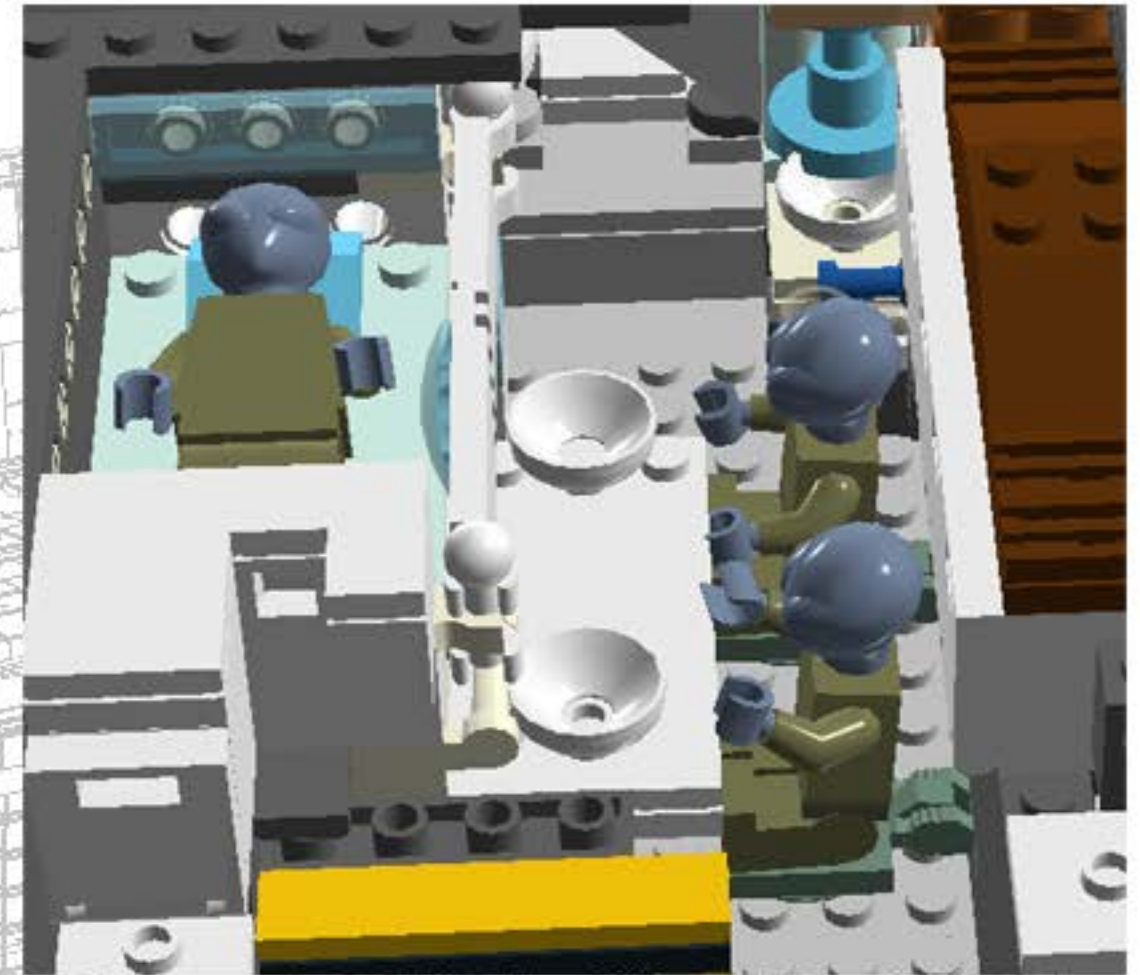
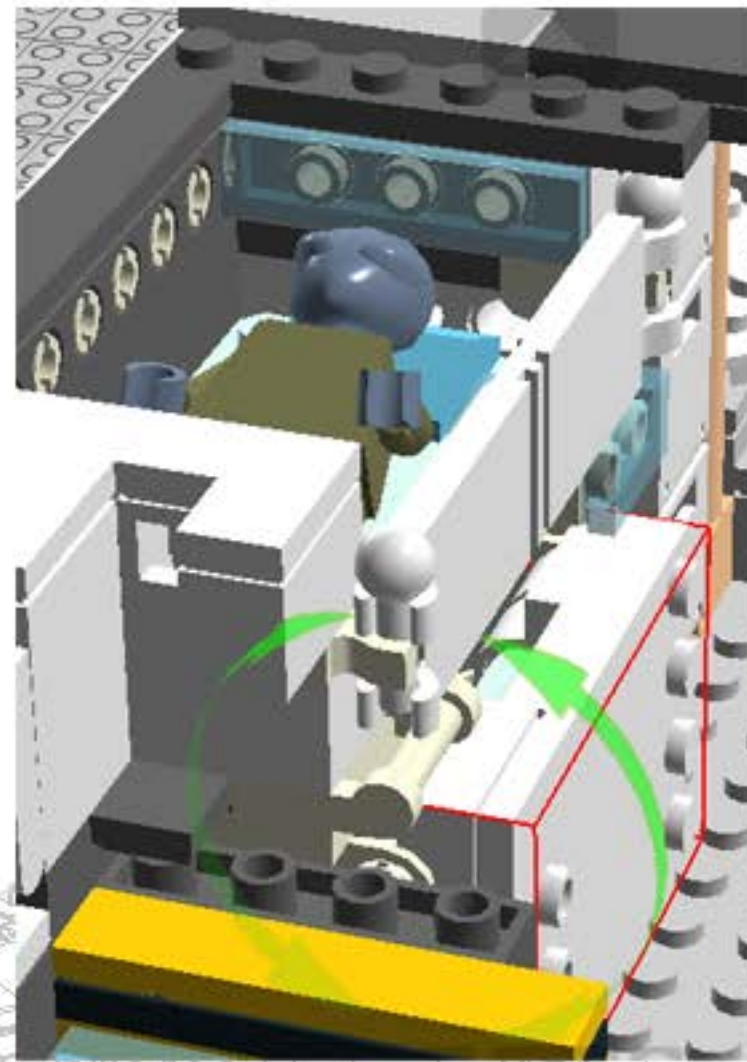
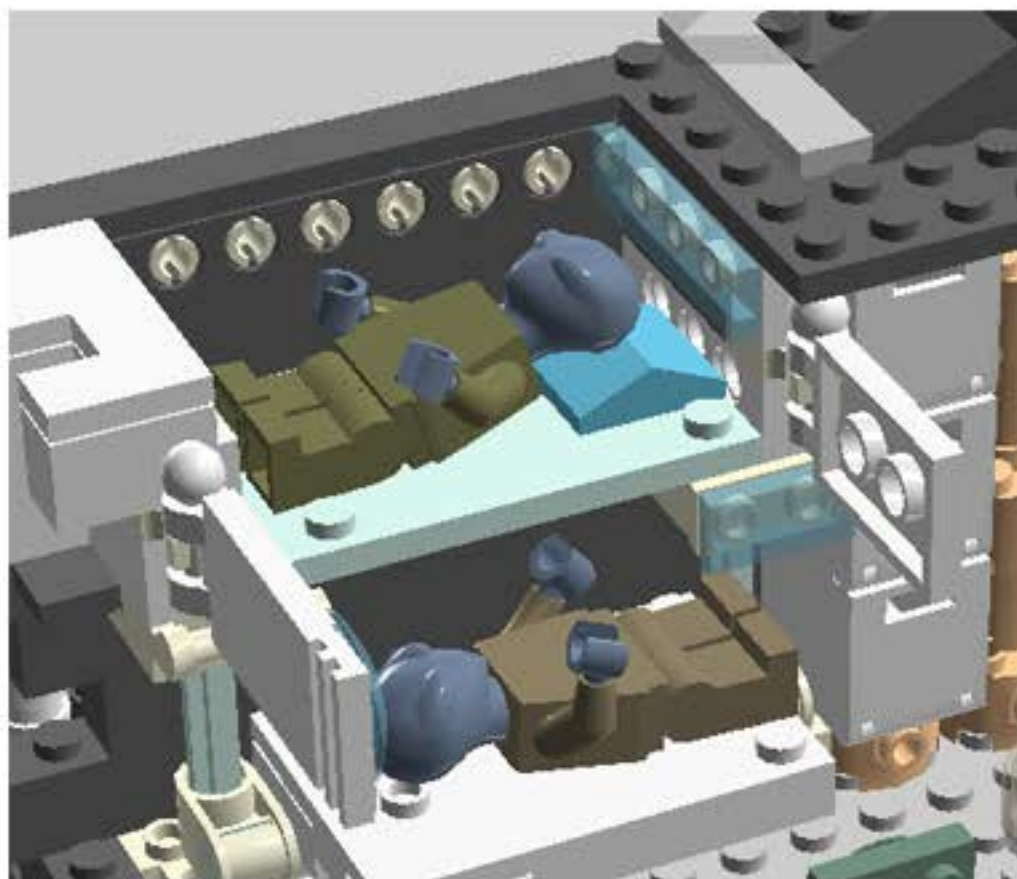




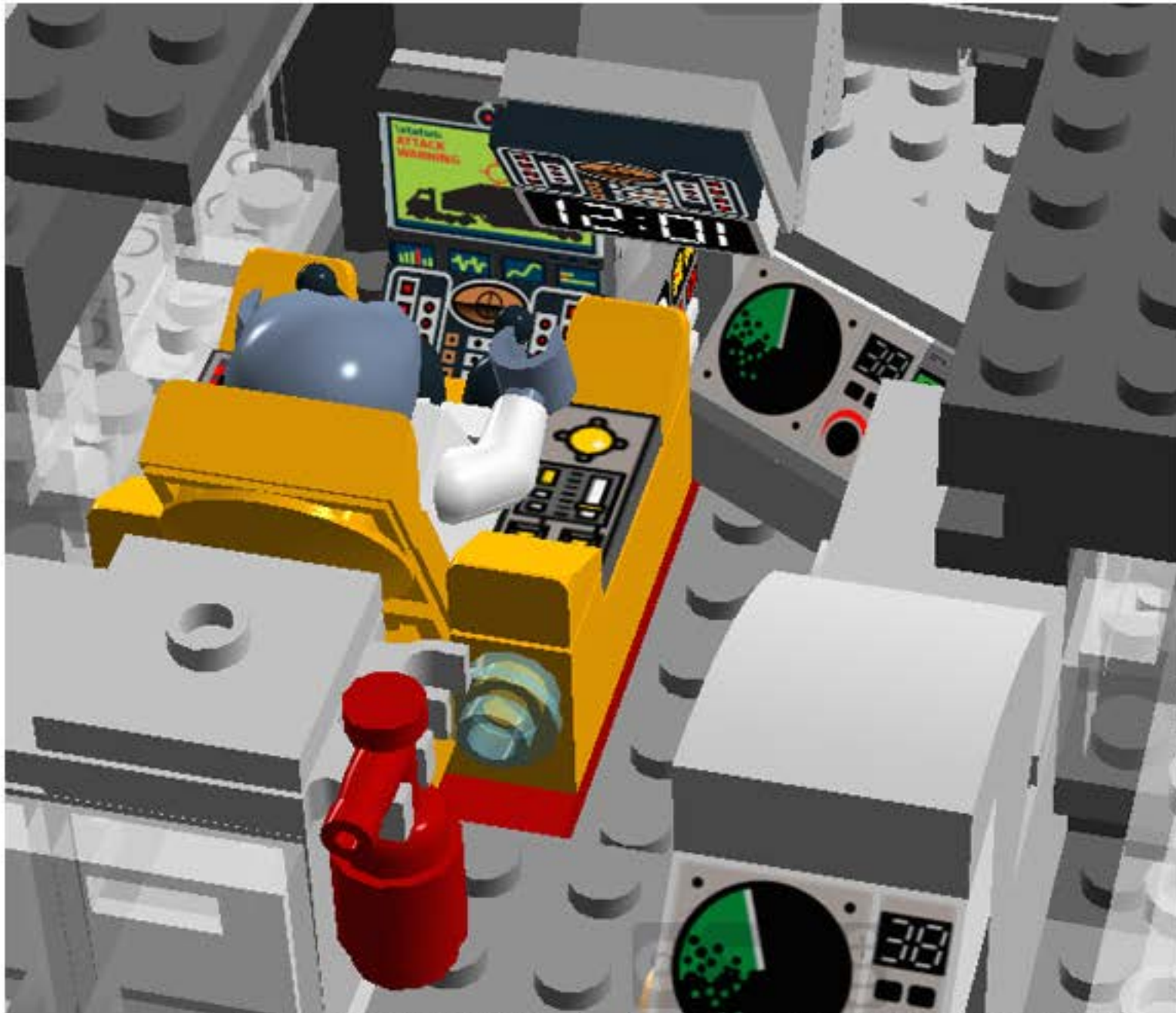
HWK-290s are light, fast, agile craft designed for speed and comfort rather than heavy lifting. They are handsome vessels with lean, angular hulls and narrow, deeply tinted viewports which make them look fast and aggressive.



Sturdy, fully retractable landing gear does not limit the operations to tarmac only, allowing instead for wide range of off-field landings. The rotary airlock is located in mid section of the craft, and doubles as a space docking port. Folding ladder system is provided as standard.



Modern bright interior of the living quarters will make long trips enjoyable. One sound-proof cabin will allow undisturbed sleep or work while the crew or the passengers perform their daily activities. The large table can be converted to a double bunk or stowed away if not needed.



Comfortable captain's seat is located in the front left part of the cockpit. All the systems can be reconfigured to fully handle from this seat, including sensors display and the optional weaponry.

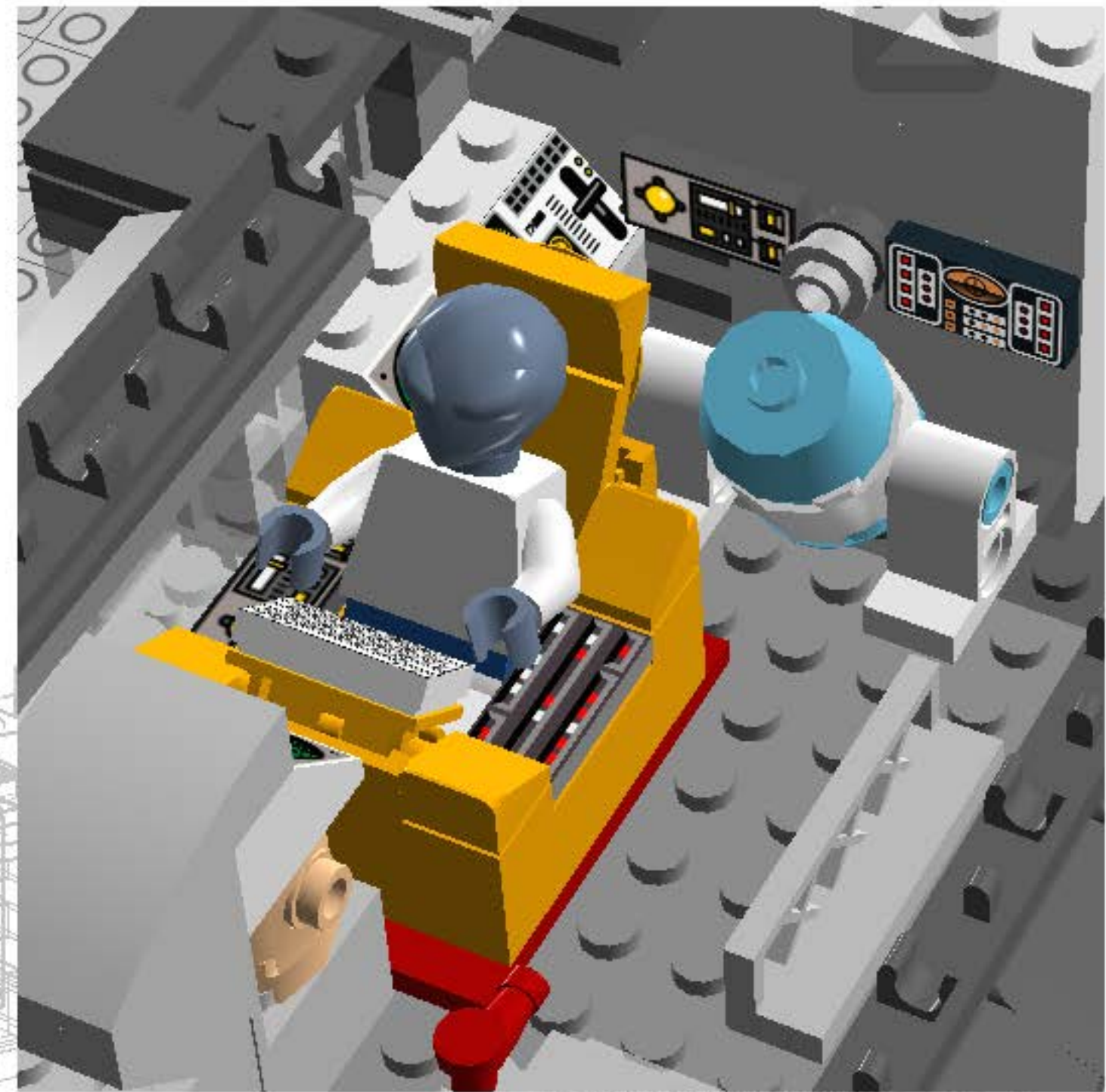
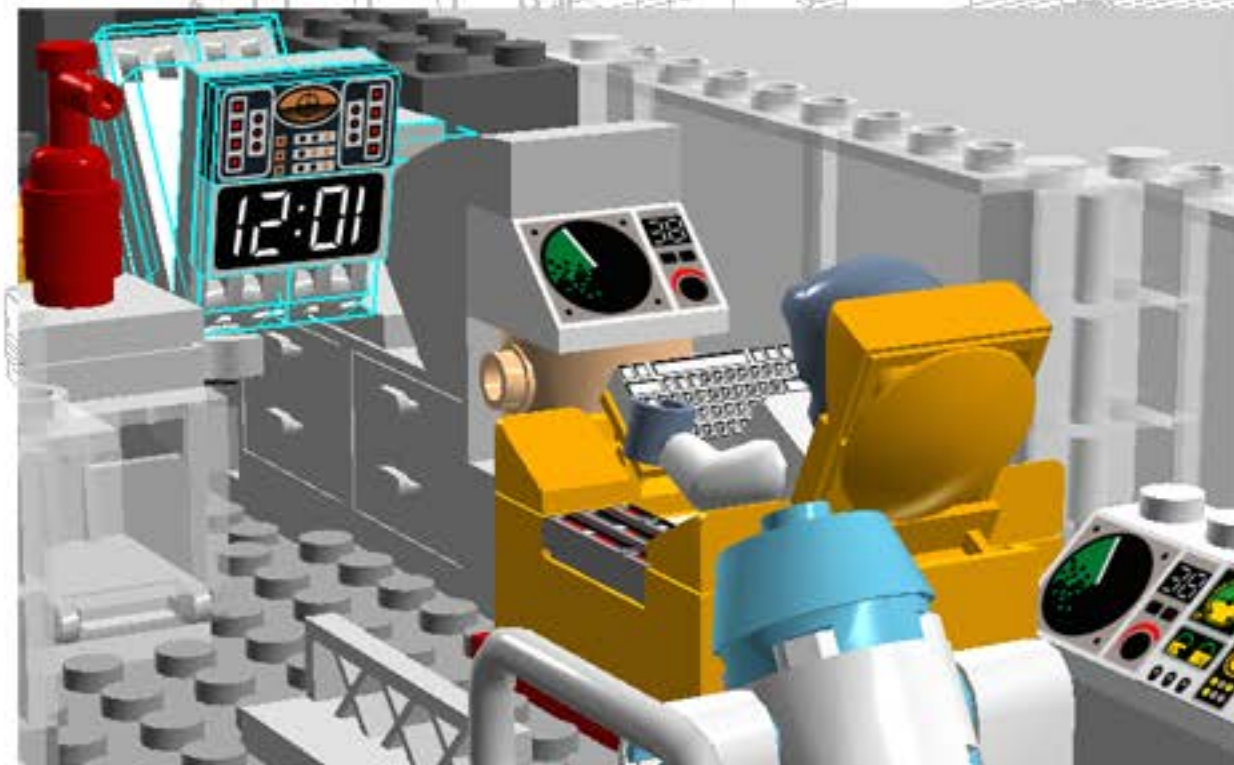
Ejection seats are available as an extra option.

Please note that the ejection seats should only be used with the properly certified vacuum suits, as the seat does not provide environment protection. Lockers for the suits are conveniently located behind the captain's seat, on your way from the airlock. For the best experience, CEC recommends using A/KT Wing Commander Armored Flight Suit.



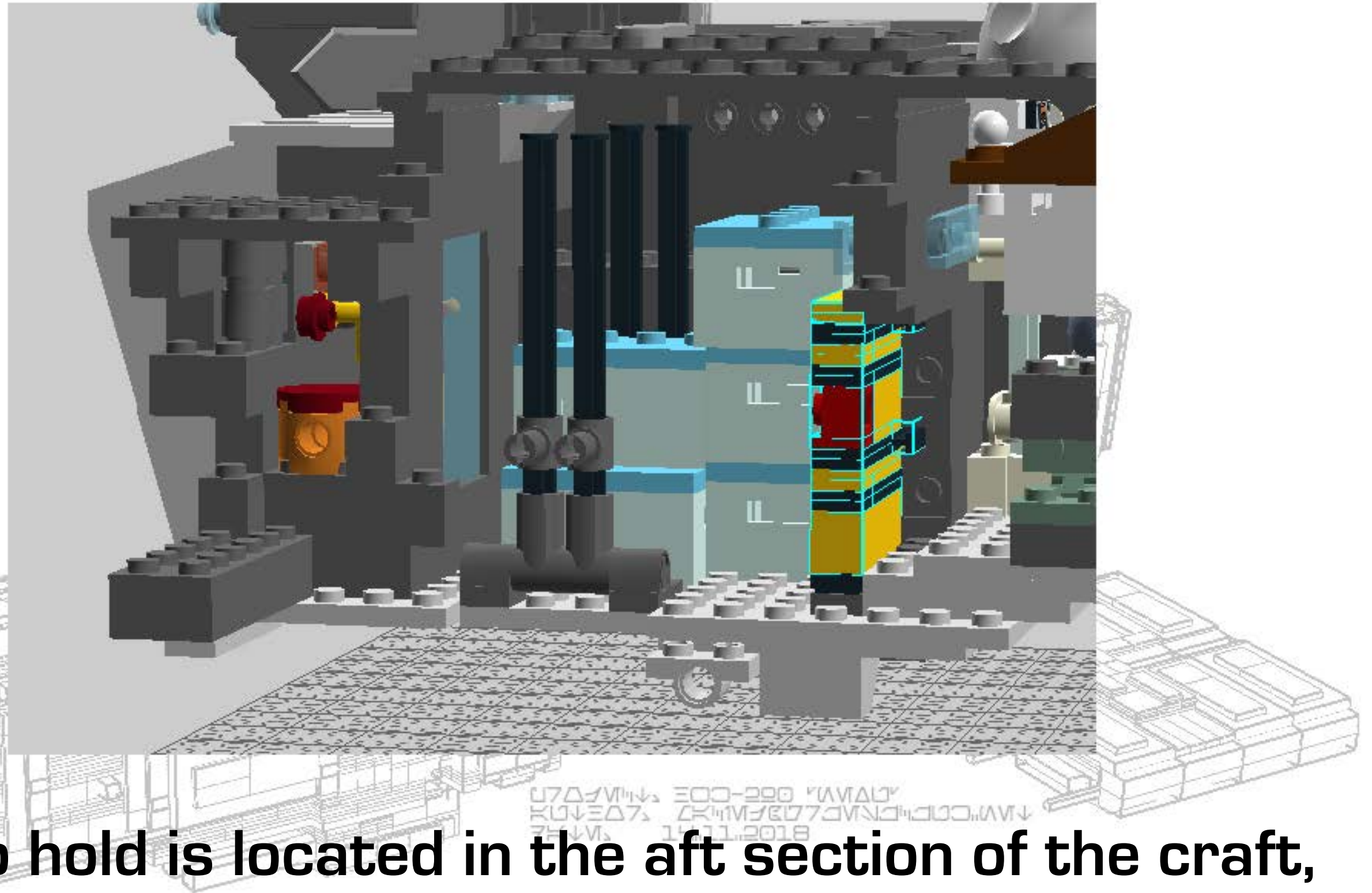
Copilot's station offers access to all the sensors, comms as well as system status and diagnostics panels.

Optional astromech socket can be added for increased performance.

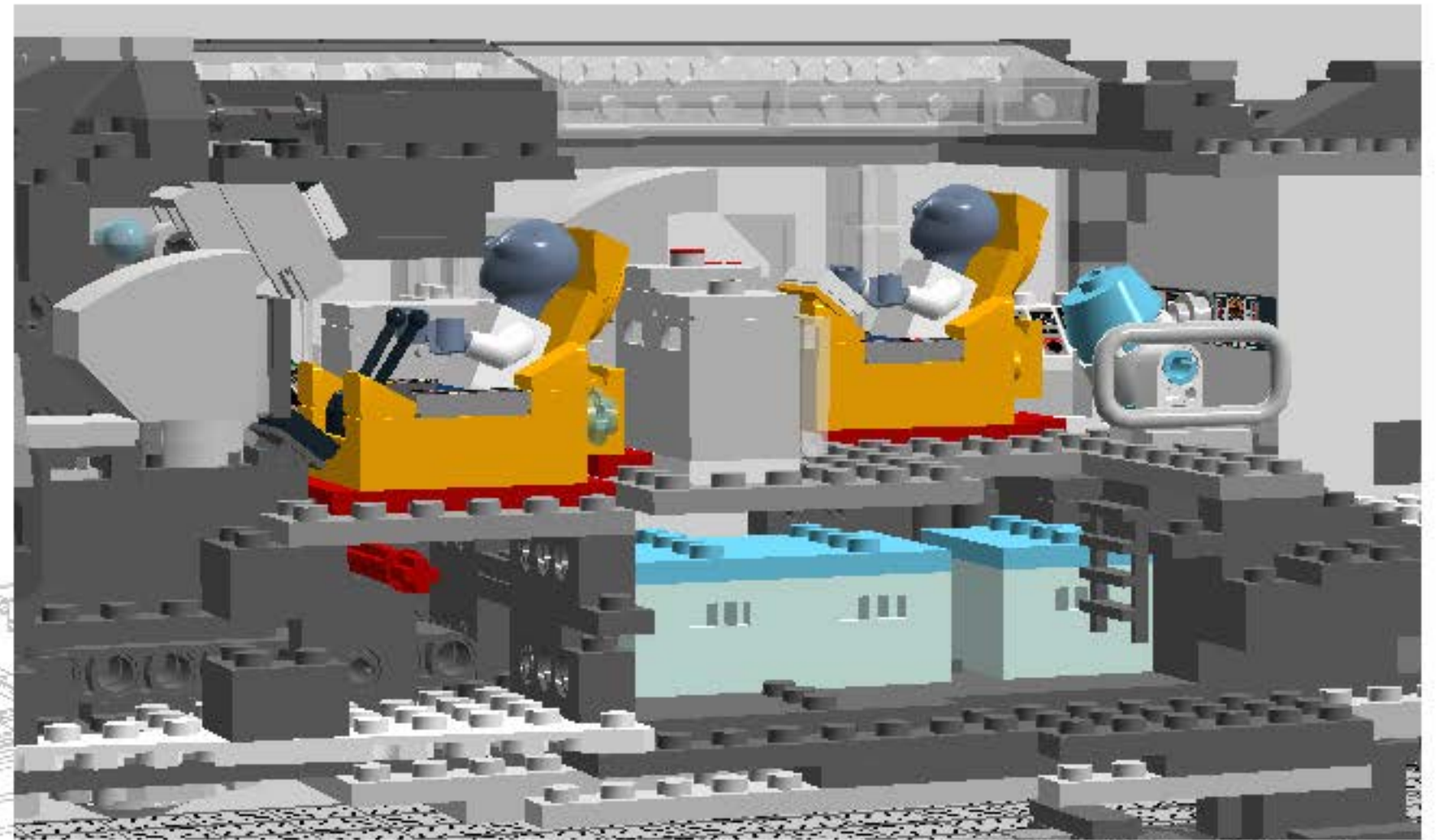
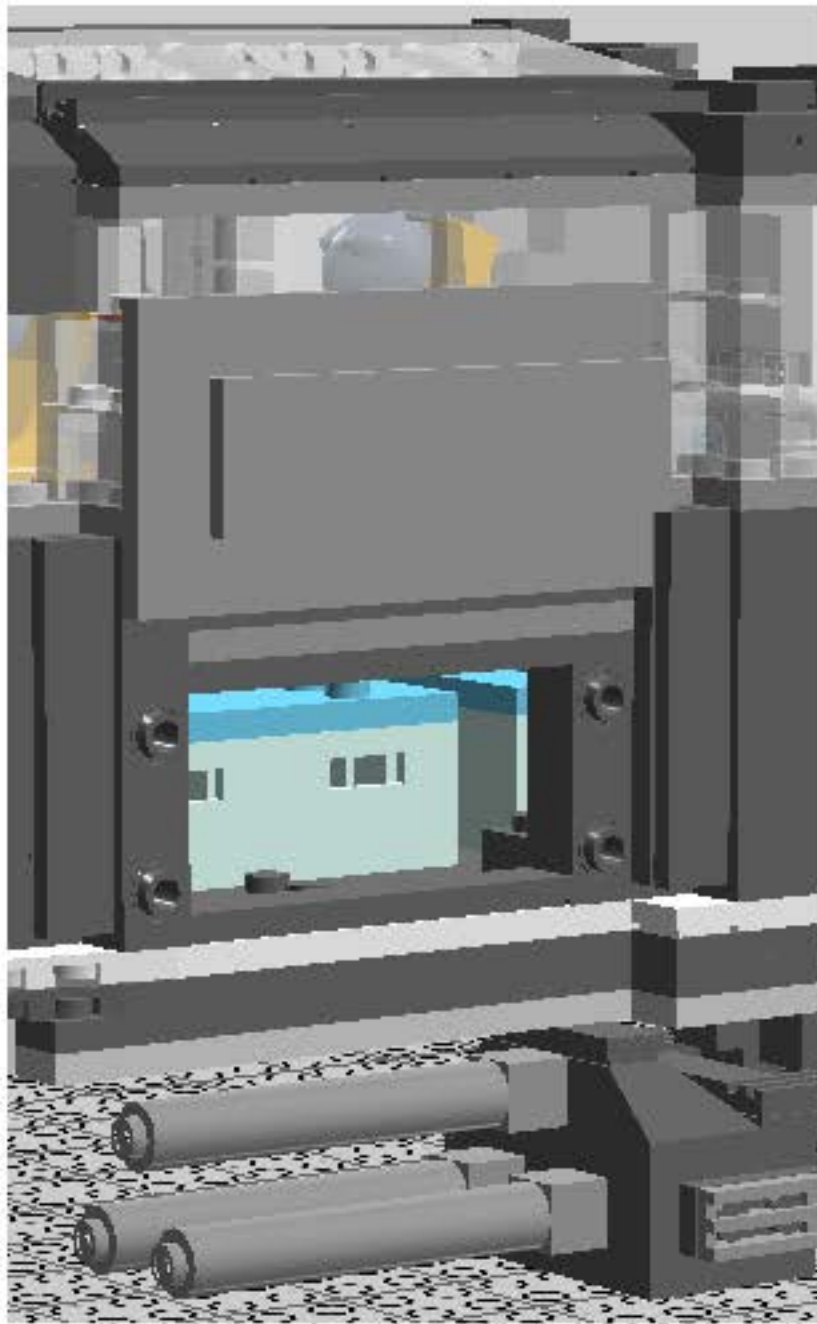


Top instrument rail allows for quick reconfiguration of the working stations, i.e. moving the advanced targeting system*.

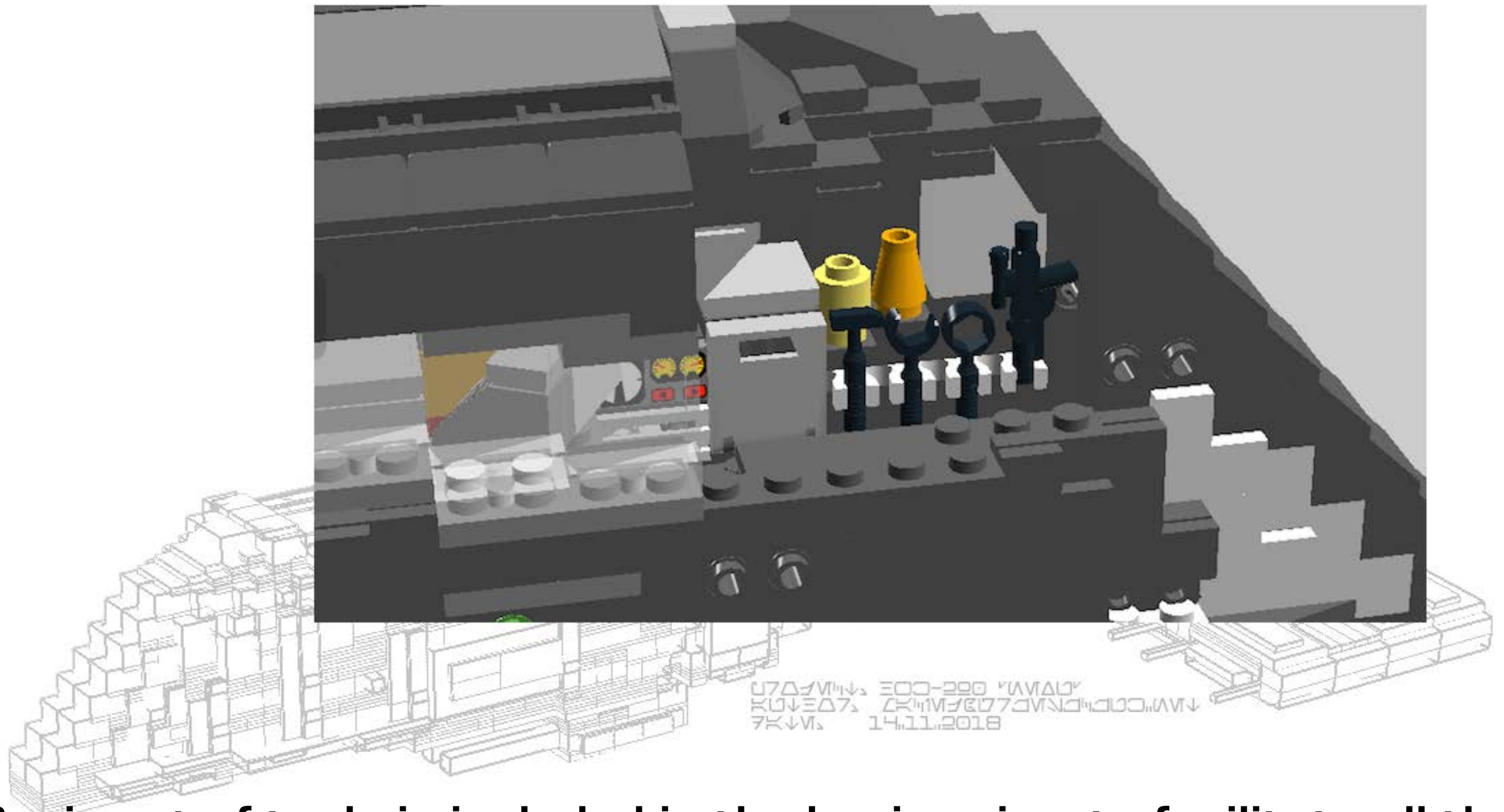
** - comes separately*



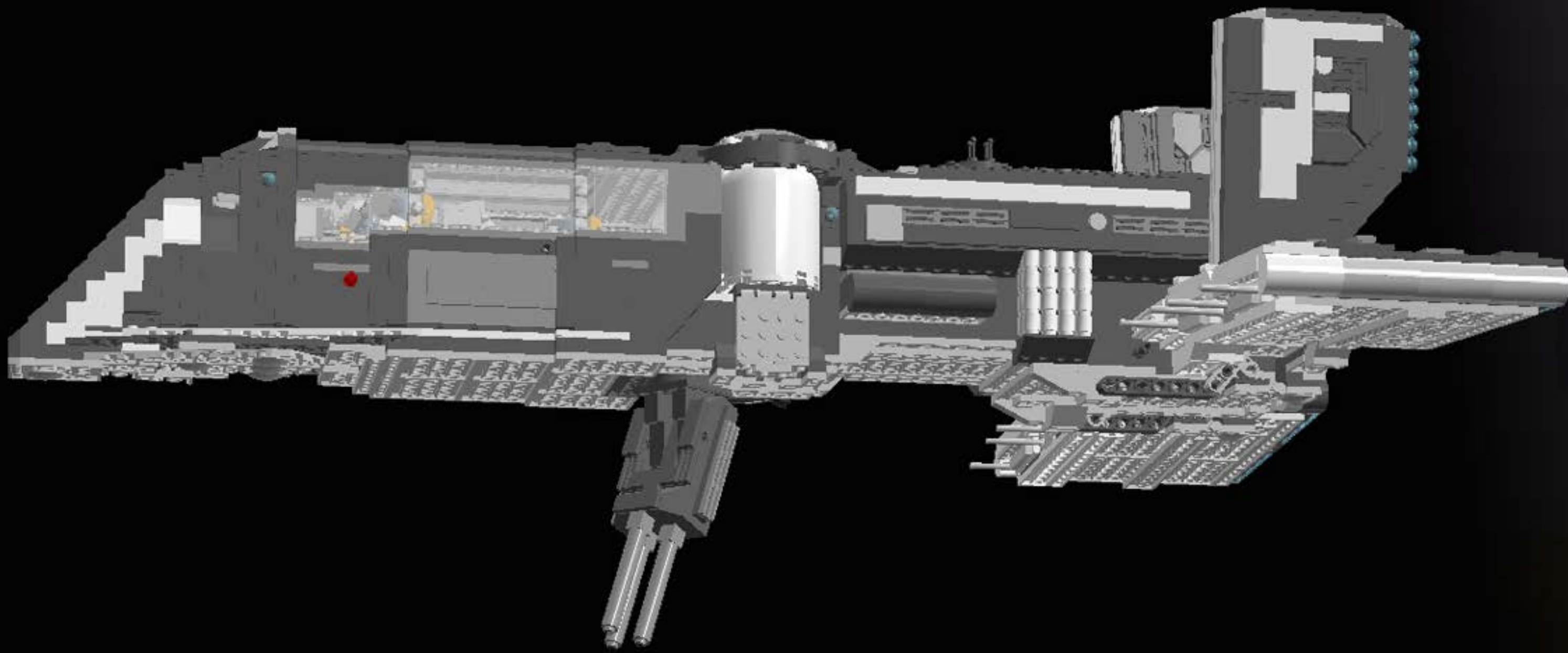
Main cargo hold is located in the aft section of the craft, isolated from the crew living area by sturdy air-tight blast doors. It is equipped with a cargo lift, and has a certified capacity enough to easily fit 6 standard ENC8 crates.



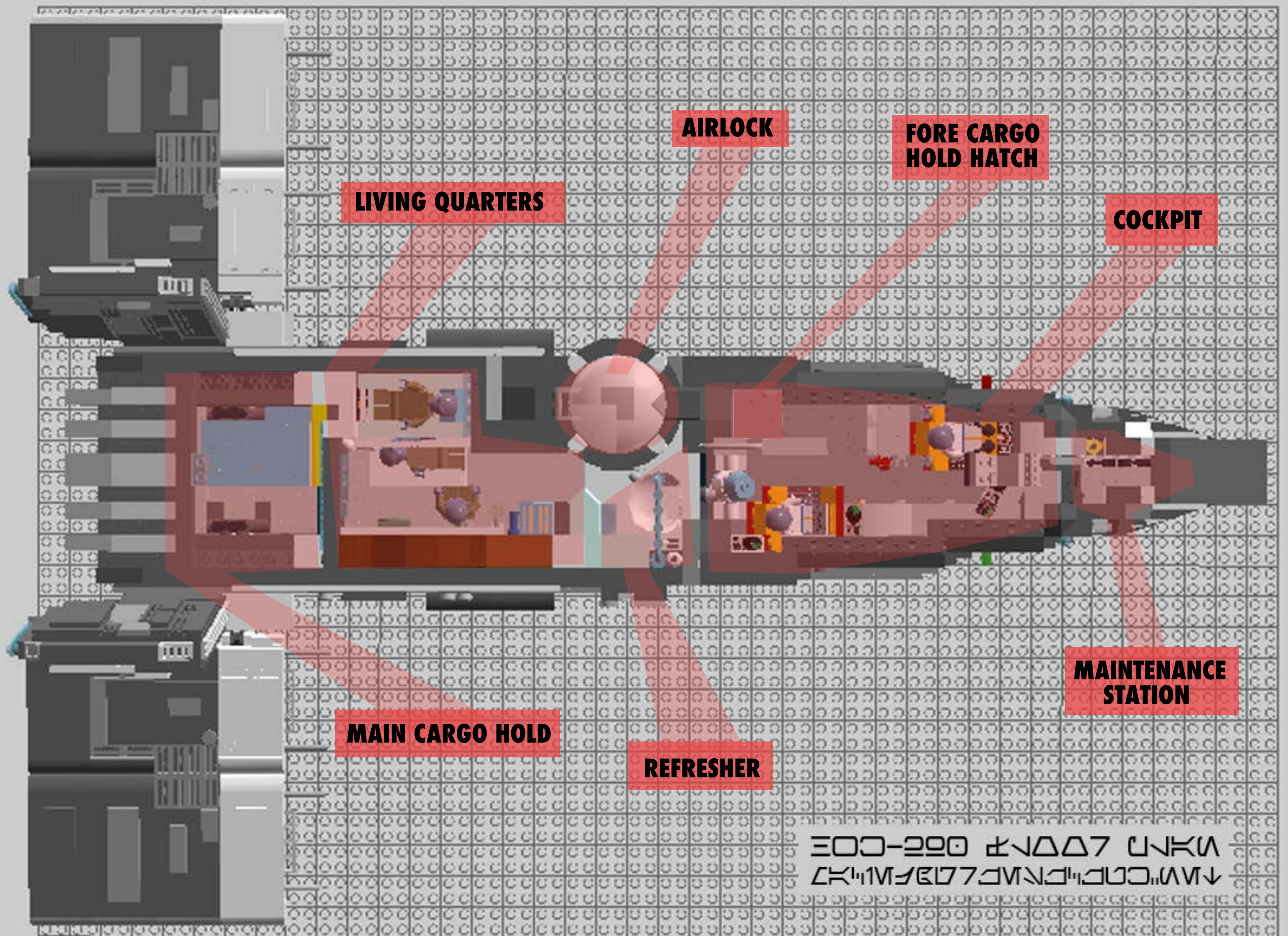
Fore cargo hold, located in the bottom of the front section of the hull, holds 3 standard ENC8 crates, and is available through cargo doors on port and starboard side of the hull, as well as through the hatch from inside the cockpit.



Basic set of tools is included in the basic price, to facilitate all the necessary maintenance and small repairs during the 3 months trip. Maintenance station is located in the fore part of the hull.



Adding some firepower to your HWK-290 has never been easier. Just pick the ventral turret option and choose from the wide catalogue of weaponry something that will fit your needs. Advanced Targeting Array and Gunner Droid Brain are also available.







CREDITS:

- HWK-290 stats from Force and Destiny Core Rulebook as guideline material for reality checks
- Part of FoD description used on page 2 as introduction
- modeled in LDD based on FFG X-Wing Miniatures model
- painting scheme inspired by Walter Wail's model
- floorplan based on Vornskr's floorplan by Ruakar
- the ship in presented configuration is "Nexu" from EotE turned FaD RPG campaign GM'd by Witold Witaszewski

– maciej@grzeszczuk.net